

Email: [directoracad.cbse@nic.in](mailto:directoracad.cbse@nic.in)

Website: [www.cbseacademic.in](http://www.cbseacademic.in)

Tel: 011-23212603

Tele Fax: 011-23234324



केन्द्रीय माध्यमिक शिक्षा बोर्ड

(मानव संसाधन विकास मंत्रालय, भारत सरकार, के अधीन एक स्वायत्त संगठन)

शिक्षासदन, 17, इन्सटिट्यूशनल क्षेत्र, राउज एवेन्यु, दिल्ली-110002.

**CENTRAL BOARD OF SECONDARY EDUCATION**

*(An Autonomous Organization under the Union Ministry of Human Resource Development, Govt. of India)*

**"Shiksha Sadan", 17, Institutional Area, Rouse Avenue, New Delhi-110002.**

CBSE/ACAD/Dir. (ART&I)/2014

Circular No. Acad-32/2014

Dated: 19.09.2014

All Heads of Schools affiliated to CBSE.

### Subject: CBSE Expression Series

CBSE is committed to the holistic development of students and strongly feels that students of today must be made aware of the selfless and valiant services of the women and men who have served the nation. The present day India has been possible only because several women and men of yester years worked incessantly towards nation-building.

In continuation of its earlier efforts, the CBSE now announces an **Expression Series on Pandit Deendayal Upadhyaya, a renowned thinker**. His life and contribution can be a source of inspiration for the present generation. This Expression Series will open from **19<sup>th</sup> September 2014 to 22<sup>nd</sup> September 2014**. **The participants can submit their entries from 9:00 a.m. to 5:00 p.m. each day**. Winners will be announced on **25<sup>th</sup> of September 2014**, which is the birthday of **Pandit Deendayal Upadhyaya**.

**Salient features of this Expression Series are as follows:-**

- Entries can be submitted both in online and offline mode.
- Entries will be divided in three categories, i.e. **Classes I-V, Classes VI-VIII and Classes IX-XII**.
- Entries can be submitted **individually**, in a **pair of two students**, or as a **part of a school team** with not more than **five students** in the team.
- **Multiple mediums**, like **essay, poem, one act plays (script not to exceed 2000 words), drawings, paintings, sketches, or a mix of various mediums** (that convey the message of the topic) can be used. **Differently abled/Visually impaired** students can also use the audio/ video mode.
- Entries can be submitted in any of the 22 scheduled languages or in English.

- Different Topics for the different categories and applicable word limit (in case the expression is in the form of writing) are given in ***Annexure I***.
- From each category of entries, 30 best entries **(10 individual entries, 10 pair entries and 05 team entries and 05 for differently abled students)** will be chosen.
- **Plagiarised entries will be rejected without any notice. There will also be a telephonic/face to face interaction to ascertain the originality of the entries submitted.**
- The **criteria for the evaluation** will include: originality of expression, presentation, use of multiple media and relevance to the topic. Students need to refrain from directly taking material from the resources available. On the other hand, they should research on the topic and write in their own words.
- **The selected entries will receive a cash prize of Rs. 5000/- each along with a Certificate of Merit. All the participants will receive an online certificate provided they give accurate details.**
- **Online registration and its details are given in *Annexure - II*. You can also submit your entry through Offline mode by using link provided for offline submission (refer Annexure III) or through WhatsApp (refer Annexure IV)**
- For further queries, please contact **PS to Chairman at 011-23220154, 23230565 or PS to Director (ART & I) at 011-23212603, 23234324.**

With regards,

Sd/-

**(Dr.Sadhana Parashar)**

**Director (Academics, Training, Research & Innovation)**

**Encl:**

Annexure I: Topics

Annexure II: Online Registration

Annexure III: Offline submission

Annexure IV: WhatsApp submission

**Copy to the respective Heads of Directorates, Organizations and Institutions as indicated below with a request to disseminate the information to all the schools under their jurisdiction:**

1. *The Commissioner, Kendriya Vidyalaya Sangathan, 18-Institutional Area, Shaheed Jeet Singh Marg, New Delhi-110016.*
2. *The Commissioner, Navodaya Vidyalaya Samiti, B-15, Sector-62, Institutional Area, Noida-201309.*
3. *The Director of Education, Directorate of Education, Govt. of NCT of Delhi, Old Secretariat, Delhi-110 054.*
4. *The Director of Public Instructions (Schools), Union Territory Secretariat, Sector 9, Chandigarh-160 017.*
5. *The Director of Education, Govt. of Sikkim, Gangtok, Sikkim – 737101.*
6. *The Director of School Education, Govt. of Arunachal Pradesh, Itanagar –791 111*
7. *The Director of Education, Govt. of A&N Islands, Port Blair - 744101.*
8. *The Director of Education, S.I.E., CBSE Cell, VIP Road, Jungle Ghat, P.O.744103, A&N Islands*
9. *The Secretary, Central Tibetan School Administration, ESS Plaza, Community Centre, Sector 3 Rohini, Delhi-110085.*
10. *All Regional Directors/ Regional Officers of CBSE with the request to send this circular to all the Heads of the affiliated schools of the Board in their respective regions.*
11. *All Associate Professor & Additional Directors/ Advisors/ Consultants*
12. *All Additional Director/ Joint Director/ Deputy Director/ Assistant Director, Vocational Cell, CBSE*
13. *The Research Officer (Technology) with the request to put this circular on the CBSE websites.*
14. *All Assistant Professor & Joint Directors, CBSE*
15. *All Assistant Professor & Deputy Directors, CBSE*
16. *The Deputy Director (Examination & Reforms), CBSE*
17. *The Assistant Librarian, CBSE*
18. *The Public Relations Officer, CBSE*
19. *The Hindi Officer, CBSE*
20. *PS to Chairman, CBSE*
21. *PS to Secretary, CBSE*
22. *SO to Controller of Examinations, CBSE*
23. *PS to Director (Special Exams and CTET), CBSE*
24. *PA to Professor & Director (Academics, Research, Training & Innovation), CBSE*
25. *PA to Director (Information Technology)*
26. *PA to Director (EDUSAT)*

**Director (Academics, Training, Research & Innovation)**

**Classes IX to XII (500 words):-**

1. Can you visualise the India Pt. Deendayal Upadhyaya dreamt about in your own expression? Please elaborate.

OR

2. Using various mediums, generate a visual based on the ideas of the great visionary Pt. Deendayal Upadhyaya.

**Classes VI to VIII (250 words):-**

1. What is the relevance of Pt. Deendayal Upadhyaya in the present context?

**Classes I to V (100 words):-**

1. Pt. Deendayal Upadhyaya was a great leader. What do you learn as a student from his life?

**Note:**

Students may use multiple mediums, like essay, poem, one act plays (Script not to exceed 2000 words), drawings, paintings, sketches, or a mix of various mediums (that convey the message of the topic)

**कक्षा नौवीं से बारहवीं (500 शब्द)–**

1 क्या आप अपने शब्दों में उस भारत को व्यक्त कर सकते हैं जिसका सपना पंडित दीनदयाल उपाध्याय ने देखा था? कृपया विस्तारपूर्वक वर्णन करें।

अथवा

2 एक महान नेता एवं युवाओं हेतु प्रेरणा स्रोत के रूप में पंडित दीनदयाल उपाध्याय का जीवन वृत्तांत विभिन्न माध्यमों का प्रयोग कर बनाइए।

**कक्षा छठी से आठवीं (250 शब्द)–**

आज के परिप्रेक्ष्य में पंडित दीनदयाल उपाध्याय की क्या प्रासंगिकता है?

**कक्षा एक से पाँच (100 शब्द)–**

पंडित दीनदयाल उपाध्याय एक महान नेता थे। एक छात्र के रूप में आप उनके जीवन से क्या सीख सकते हैं?

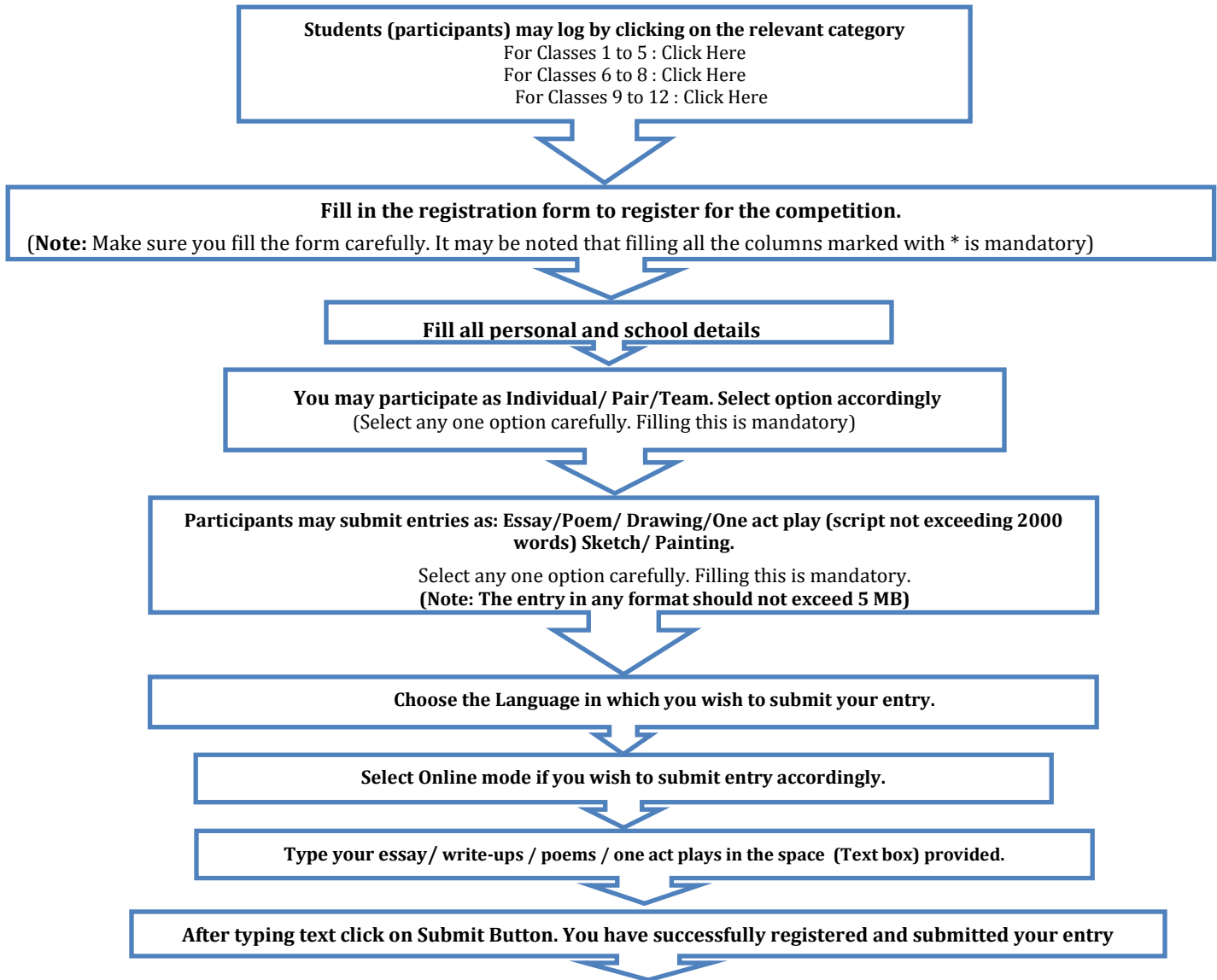
**टिप्पणी–**

शिक्षार्थी एक से अधिक माध्यमों जैसे– निबंध, कविता, एकांकी नाटक (जिसकी पटकथा 2000 शब्दों से अधिक नहीं होनी चाहिए), चित्रकला, रेखाचित्र तथा इनके जैसे अन्य माध्यमों (जो विषय का संदेश संप्रेषित करने में सक्षम हों) अथवा इनके मिश्रण का प्रयोग कर सकते हैं।

### Process flow for Online Submission

All participants willing to participate may refer to following instructions:

In order to register or to submit essay/ write-ups / poems / one act plays / drawings/ paintings/ sketches, or a mix of various mediums:



- Notes:**
1. Entries sent through email will not be entertained at all.
  2. Entries should not exceed 5MB in any format. Visually impaired students can also use the audio/ video mode.
  3. Entries can be submitted in any of the 22 scheduled languages or in English
  4. For those who are going to use the online mode, may register only once as multiple registration may lead to disqualification.
  5. The entries should not exceed the word limit as mentioned.
  6. The entries/ writings must be original.
  7. The principals need to ensure that the entries being submitted by the students are not plagiarized.
  8. If at any stage the entries submitted are proven to be plagiarized or are without the registration details, the entry will be disqualified.
  9. Plagiarism, if detected at any point of time, will lead to **withdrawal of the prize**.
  10. **Plagiarised entries will be rejected without any notice and before final selection.**
  11. **There will also be a telephonic/face to face interaction only to ascertain the originality of the entries submitted.**
  12. Students can refer to as many resources as they can avail, however the entries submitted must be in their own language.
  13. Final entries shall be selected by a panel of experts.
  14. **No further communication will be entertained on the selected entries.**

### Process flow for Offline Submission

In order to submit **Offline** registration following steps may be followed:

Participants may submit entries as: Essay/Poem/ Drawing/One act play (script not to exceed 2000 words)  
Sketch/ Painting/ mix of all mediums

You may participate as Individual/ Pair/Team. Specify it on your entry. Also mention if you are differently abled/ visually impaired.

Write your name and complete school address before you start writing.

Once you have completed your entry, save file or **scan the document**, and go **on line and upload your document by clicking on anyone of the links given below:**

Link 1 : [Click Here](#)

Link 2 : [Click Here](#)

**Notes:** 1.Entries sent through email will not be entertained at all.

2.Entries should not exceed 5MB in any format. Visually impaired students can also use the audio/ video mode.

3. Entries can be submitted in any of the 22 scheduled languages or in English

4. For those who are going to use the online mode, may register only once as multiple registration may lead to disqualification.

5. The entries should not exceed the word limit as mentioned.

6. The entries/ writings must be original.

7. The principals need to ensure that the entries being submitted by the students are not plagiarized.

8. If at any stage the entries submitted are proven to be plagiarized or are without the registration details, the entry will be disqualified.

9. Plagiarism, if detected at any point of time, will lead to **withdrawal of the prize**.

10. **Plagiarised entries will be rejected without any notice and before final selection.**

11. **There will also be a telephonic/face to face interaction only to ascertain the originality of the entries submitted.**

12. Students can refer to as many resources as they can avail, however the entries submitted must be in their own language.

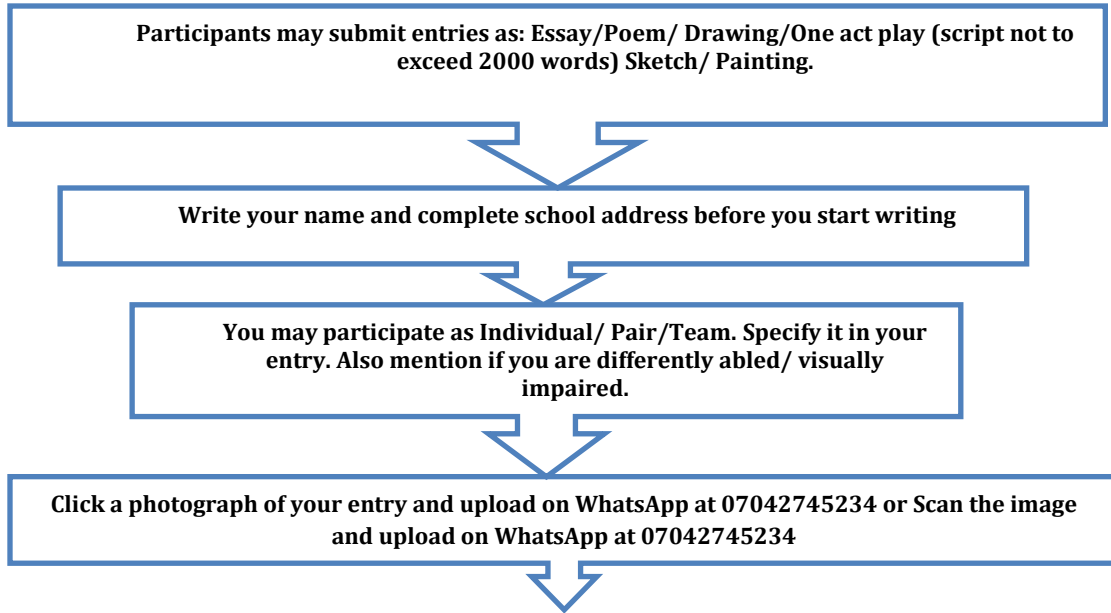
13. Final entries shall be selected by a panel of experts.

14. **No further communication will be entertained on the selected entries.**

### Process flow for Offline Submission using WhatsApp

All participants willing to participate may refer to following instructions:

In order to register or to submit essay/ write-ups / poems / one act plays / drawings/ paintings/ sketches, or a mix of various mediums:



**Notes:** 1. Entries sent through email will not be entertained at all.

2. Entries should not exceed 5MB in any format. Visually impaired students can also use the audio/ video mode.
3. Entries can be submitted in any of the 22 scheduled languages or in English
4. For those who are going to use the online mode, may register only once as multiple registration may lead to disqualification.
5. The entries should not exceed the word limit as mentioned.
6. The entries/ writings must be original.
7. The principals need to ensure that the entries being submitted by the students are not plagiarized.
8. If at any stage the entries submitted are proven to be plagiarized or are without the registration details, the entry will be disqualified.
9. Plagiarism, if detected at any point of time, will lead to **withdrawal of the prize**.
10. **Plagiarised entries will be rejected without any notice and before final selection.**
11. **There will also be a telephonic/face to face interaction only to ascertain the originality of the entries submitted.**
12. Students can refer to as many resources as they can avail, however the entries submitted must be in their own language.
13. Final entries shall be selected by a panel of experts.
14. **No further communication will be entertained on the selected entries.**